

A family business: stem cell progeny join the niche to regulate homeostasis

Ya-Chieh Hsu and Elaine Fuchs

Abstract | Stem cell niches, the discrete microenvironments in which the stem cells reside, play a dominant part in regulating stem cell activity and behaviours. Recent studies suggest that committed stem cell progeny become indispensable components of the niche in a wide range of stem cell systems. These unexpected niche inhabitants provide versatile feedback signals to their stem cell parents. Together with other heterologous cell types that constitute the niche, they contribute to the dynamics of the microenvironment. As progeny are often located in close proximity to stem cell niches, similar feedback regulations may be the underlying principles shared by different stem cell systems.

Basement membrane

A sheet-like structure that is composed of extracellular matrix and separates the cavity and surfaces of an organ.

Cancer stem cells

Long-term self-renewing cells within a tumour that are responsible for initiating the cancer and propagating it. The term does not reflect the origin of these cells or their molecular similarities to normal stem cells. Rather, these cells are tumour-initiating cells and can execute a differentiation programme, but it is an aberrant one.

Adult stem cells are undifferentiated and long-lived cells, which are found in most tissues throughout the human body (FIG. 1). They have the remarkable capacity to replenish themselves through self-renewal and to give rise to either one (unipotent) or more (multipotent) downstream differentiated cell lineages.

Epidermal, blood and intestinal cells undergo daily turnover as part of their normal differentiation process, necessitating constant use of stem cells. In the hair follicle, stem cells are needed only periodically to fuel cyclical bouts of hair growth^{1–3}. However, even within relatively dormant tissues, such as adult skeletal muscle and brain, cell-type specific stem cells still exist^{4–7}. Such stem cells undergo extremely low or no division during normal homeostasis but can respond efficiently to stimuli, such as learning activities in the brain or injury in the muscle.

In the skeletal muscle, stem cells are sandwiched between mature muscle fibres and the basement membrane. Upon injury, they proliferate and differentiate to form new myofibres⁸. In the central nervous system, stem cells are found in the subventricular zone, where they generate neurons that migrate to the olfactory bulb⁶, and in the subgranular zone of the hippocampus, where adult neurogenesis has been linked to learning and memory^{7,9}.

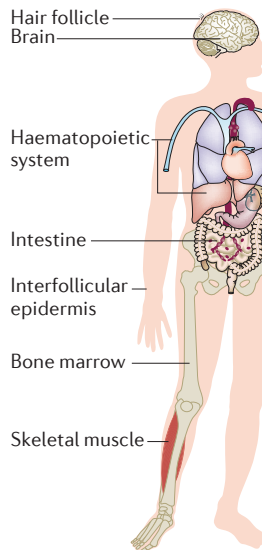
In most tissues, stem cells are used sparingly, leaving the bulk of tissue regeneration to transiently dividing but committed progeny. As such, the stem cells often remain quiescent for extended periods of time and are only called into action briefly upon initiation of homeostasis or injury. In a few cases, such as in the epidermis and intestine, stem cells seem to be in a state of perpetual action, with the epithelium producing differentiating cells daily^{10,11}.

In malignant tissues, cancer stem cells appear to hijack mechanisms used to regulate normal stem cell functions. Like many of their normal counterparts, cancer stem cells can exist in both slow-cycling and more-rapidly cycling states^{12–15}. Thus, to appreciate how stem cell behaviour changes in pathological states (injury, degeneration and cancer), it is crucial to understand stem cell behaviour under physiological (development and homeostasis) conditions.

Stem cells reside in specific anatomical locations known as niches, which create unique microenvironments (BOX 1). Each niche has a dominant role in controlling stem cell behaviour. Signals from the niche influence the cycling status of stem cells and also help to maintain their undifferentiated state. The existence of the niche was initially postulated by Schofield¹⁶, but it remained an abstract concept until niche cells for *Drosophila melanogaster* female and male germline stem cells were identified and characterized^{17–19}. With recent advances in niche component isolation methods, imaging techniques and genetic tools, various mammalian stem cell niches have been identified with increasing precision^{3,20–27}. With these tools, many intriguing regulatory mechanisms have begun to unfold.

Traditionally, niche cells were believed to be derived exclusively from cell lineages different from those of the stem cells they regulate. Studies from both vertebrate and invertebrate niches have now begun to change this view, identifying stem cell progeny as critical components that impart feedback to their powerful parents to control stem cell activity and behaviour. In this Review, we summarize recent progress in delineating various types of feedback mechanisms provided by stem cell

Howard Hughes Medical Institute and Laboratory of Mammalian Cell Biology & Development, The Rockefeller University, 1230 York Avenue, Box 300, New York, New York 10065, USA. Correspondence to E.F. e-mail: fuchslib@rockefeller.edu
doi:10.1038/nrm3272



Tissue type	Stem cell location	Niche components
Tissues with constant turnover		
Haematopoietic system	Bone marrow	Macrophages*, T _{Reg} cells*, osteoblasts, adipocytes, nestin ⁺ MSCs, CAR cells, glia
Intestine	Fast-cycling: base of crypt Slow-cycling: '+4 position'	Paneth cells*, mesenchymal cells
Interfollicular epidermis	Basal layer of epidermis	Dermal fibroblasts
Hair follicle	Bulge	K6 ⁺ bulge*, dermal papilla, adipocyte precursor cells, subcutaneous fat, dermal fibroblasts
Tissues with low or no turnover		
Brain	Subventricular zone, subgranular zone	Ependymal cells, vasculature
Skeletal muscle	Between the basement membrane and the muscle fibres	Myofibres* (?)

Figure 1 | Overview of adult stem cells. Adult stem cells are undifferentiated cells found in many organs throughout the human body. They are capable of both long-term self-renewal and generation of the downstream differentiated cells of an organ. They can be categorized into two major groups: those with high turnover and those with low turnover. In tissues with high turnover rates, such as the haematopoietic system, intestine, interfollicular epidermis and hair follicle, stem cells are responsible for maintaining homeostasis and also for repairing damage upon wounding. Stem cells have also been reported in tissues with low or no turnover, such as the brain and the skeletal muscle. In the skeletal muscle, stem cells are mainly reserved for repair after injury. In the brain, stem cells are required for the generation of defined subsets of neurons that migrate to the olfactory bulb (stem cells in the subventricular zone) and for the generation of new neurons upon learning stimulations (stem cells in the subgranular zone). The locations of a number of stem cells and their reported niche components are listed in the table. Niche components derived from stem cells are denoted by asterisks. The question mark denotes a candidate niche component whose precise regulatory role remains to be demonstrated. CAR cells, CXCL12-abundant reticular cells; K6, keratin 6; MSCs, mesenchymal stem cells; T_{Reg} cells, regulatory T cells.

progeny, and we discuss emerging similarities and differences between systems. Although this research area is still in its infancy, the examples to date favour the notion that feedback signalling from progeny to parent may be an important and common strategy to control stem cell activity during homeostasis, wound repair and cancer.

D. melanogaster male germline

The *D. melanogaster* male germline was one of the first established models for studying interactions between stem cells and their niche.

Structure of the 'hub'. The *D. melanogaster* testis is an elongated tubular structure that is closed at the apical end and connected to the rest of the genital tracks at the basal side. The 'hub', which is composed of approximately 10–15 somatic cell clusters, resides at the apical end. Germline stem cells (GSCs) and somatic cyst stem cells (CySCs) connect to the hub through adherens junctions. Approximately 8–10 GSCs and twice as many CySCs encase the hub²⁸ (FIG. 2a).

GSCs divide asymmetrically to produce one daughter cell that maintains stem cell identity and another, the gonialblast, that initiates a differentiation programme. Gonialblasts divide synchronously with incomplete cytokinesis to form 16 interconnected germ cell cysts that will terminally differentiate and become mature sperm. CySCs also divide asymmetrically, producing cyst cells that enclose the differentiating germ cells. It is thought that cyst cells provide essential signals to

promote germ cell differentiation through Epidermal growth factor (EGF) signalling²⁹.

Signalling events in the hub. The hub has long been established as a critical niche component for both types of stem cells. The hub secretes an interleukin-like cytokine called Unpaired (UPD), which activates Janus kinase (JAK) signalling in both GSCs and CySCs. The activated downstream effector, phosphorylated Signal transducer and activator of transcription (STAT), is necessary and sufficient for CySC self-renewal^{18,19}. Two downstream targets of JAK–STAT were identified in CySCs: the zinc-finger transcription repressor *zfh1* (*zinc-finger homeodomain 1*)³⁰ and the BTB (BR-C, TTK and BAB) domain-containing nuclear factor *chinmo* (*chronologically inappropriate morphogenesis*)³¹. Both are necessary and sufficient to promote self-renewal of CySCs and to maintain their undifferentiated status. By contrast, JAK–STAT activation in GSCs is required for their anchorage to the hub but not for their self-renewal. Instead, GSC self-renewal relies on sustained signalling through Bone morphogenic protein (BMP)-like ligands Decapentaplegic (DPP) and Glass bottom boat (Gbb), which are secreted from both the hub and the CySCs^{32–34}. The outcome is transcriptional repression of a differentiation factor, *bag of marbles* (*bam*), resulting in the suppression of GSC differentiation into gonialblasts³⁴ (FIG. 2b). The interactions between GSCs and CySCs and their interdependencies are intriguing paradigms for studying the coordinated behaviours of multiple stem cell types within a shared niche.

Box 1 | Stem cell niche: past and present

The term “stem cell niche” was coined by Schofield¹⁶. Infused bone marrow cells were known to generate clones of maturing haematopoietic cells in the spleens of irradiated mice, but the efficiency varied significantly with cytotoxic regents. To explain this, Schofield proposed that stem cells associate with other cells to specify their behaviours. Unless transplanted bone marrow cells occupied a similar stem cell niche to their native location, they drifted towards differentiation. Long before a molecular understanding existed, the stem cell niche concept received support from bone marrow transplants used to treat leukaemia: successful transplantations required the irradiation of existing haematopoietic stem cells (HSCs) within the endogenous bone marrow of a patient, suggesting that the transplanted and endogenous HSCs might compete for a limited source of supporting niche cells.

The first stem cell niche described in molecular terms was that of the *Drosophila melanogaster* female germline stem cells (GSCs). Lineage-tracing studies and laser ablation experiments located GSCs at the anterior tip of ovary germlarium^{113,114}. More than two decades after Schofield's initial hypothesis, an adjacent cluster of postmitotic somatic cells, the ‘cap cells’, were discovered as a source of the bone morphogenetic protein (BMP) homologue Decapentaplegic (DPP), which is required for GSC self-renewal and maintenance^{115,116}. When resident GSCs were ablated, differentiating daughters entered the vacated space and made contact with the cap cells, prompting them to de-differentiate and become GSCs¹⁷. This differs from the mammalian hair follicle and intestine, where fully differentiated progeny can reside in the niche microenvironment without reversion^{46,83}. In this regard, each stem cell lineage seems to be tailored for its own ‘point of no return’.

Traditionally, the stem cell niche has been viewed as a microenvironment that maintains stem cells and promotes their self-renewal. With the complex and diverse regulations emerging in recent years, it is perhaps now more precise to describe the niche as a local tissue microenvironment that hosts and influences the behaviours or characteristics of stem cells. It is becoming increasingly clear that niche cells can enhance dormancy, promote activation transiently or maintain stem cells in their undifferentiated state — and all of these features are essential to preserve stem cell functions in the long term.

CySCs and the hub: more alike than different. It was assumed that, when fully developed, the hub remains static and permanent. However, recent experiments suggest that, under some circumstances, CySCs might contribute to the mature hub³⁵. The rationale behind this work was simple: if cells outside the hub are marked by either bromo-deoxyuridine (BrdU) or transgenes, then, following a chase period, markers will be observed within the hub only if its residents are dynamic rather than static. To test this possibility, researchers exploited the fact that hub cells are terminally differentiated and therefore do not divide. When β -galactosidase-expressing (β GAL⁺) CySC clones were generated through mitotic recombination³⁶, β GAL⁺ hub cells were initially absent but appeared following a chase period. Similarly, upon administration of a BrdU pulse, BrdU-positive hub cells were detected within several days. Thus, CySCs not only make the somatic cyst cells but also can contribute to their niche by making hub cells (FIG. 2c). Although CySC contribution to the hub might be rare during steady state, when CySCs carry mutations in the *lines* gene, they transform their fate to adopt characteristics of hub cells. Interestingly, lineage-tracing experiments further suggest that hub cells and CySCs originate from a common precursor pool during embryogenesis³⁷. Together, these data point to a close relationship between CySCs and hub. In the future, it will be interesting to see whether CySCs increase their contribution to hub cells during ageing or stress.

The hair follicle and its stem cells

The mouse hair follicle has emerged as an important paradigm in which to study stem cells and their niche.

Structure of the bulge: a shared stem cell niche. Epithelial hair follicle stem cells (HFSCs) reside in an anatomical region known as the bulge, which is located below the

sebaceous glands at the base of the non-cycling portion of follicles. Slow-cycling HFSCs are located in the outermost layer and are marked by high levels of integrins (α 6 β 4 and α 3 β 1), keratins (keratin 5 (K5), K14 and K15) and cell surface markers (CD34 and Leu-rich repeat-containing G protein-coupled receptor 5 (LGR5))^{3,38,39}. They also express transcription factors, including SOX9, LIM homeobox 2 (LHX2), nuclear factor of activated T cells, cytoplasmic 1 (NFATC1), T cell factor 3 (TCF3) and TCF4. Loss-of-function studies show that all of these factors help to maintain features of ‘stemness’ (REFS 40–45).

The inner layer of bulge cells forms at the end of the hair cycle (see below). These cells do not express integrins or CD34 but they do express some HFSC markers, including NFATC1, SOX9, LHX2 and TCF3. They also exhibit features not seen in HFSCs, including unusual intercellular adhesions to the hair shaft and expression of K6 (REF. 46).

The bulge base features a small cluster of cells, known as the hair germ. Transcriptional profiling shows that hair germ cells are more similar to HFSCs than to their transient amplifying progeny, that is, to matrix cells (see below)⁴⁷. Except for NFATC1 and CD34, the hair germ expresses the HFSC markers mentioned above. They can be distinguished from the bulge HFSCs by their high levels of placental cadherin (P-cadherin).

The bulge niche hosts not only HFSCs but also melanocyte stem cells (MCSCs), which are interspersed between HFSCs⁴⁸. The behaviours of HFSCs and MCSCs are coordinated, enabling differentiating MCSCs to generate and transfer pigment to matrix cells as they begin to terminally differentiate to produce hair shaft cells^{49,50}. The bulge niche has also been implicated as a residence for smooth muscle progenitors responsible for generating the arrector pili muscle, which is located just above the bulge⁵¹.

Bulge

A protruding structure of the hair follicle in which hair follicle and melanocyte stem cells reside.

Integrins

A family of cell adhesion receptors that mediate either cell–cell interactions or cell–extracellular matrix interactions. Integrins are heterodimers with two distinct subunits, which are known as the α -subunit and the β -subunit.

Hair shaft

A terminally differentiated structure that protrudes out from the skin surface as a hair.

Transient amplifying progeny

A special population of stem cell progeny responsible for the bulk of tissue growth. Transient amplifying cells are larger in quantity and are capable of massive expansion and proliferation within a short time. However, they can only undergo a finite number of divisions.

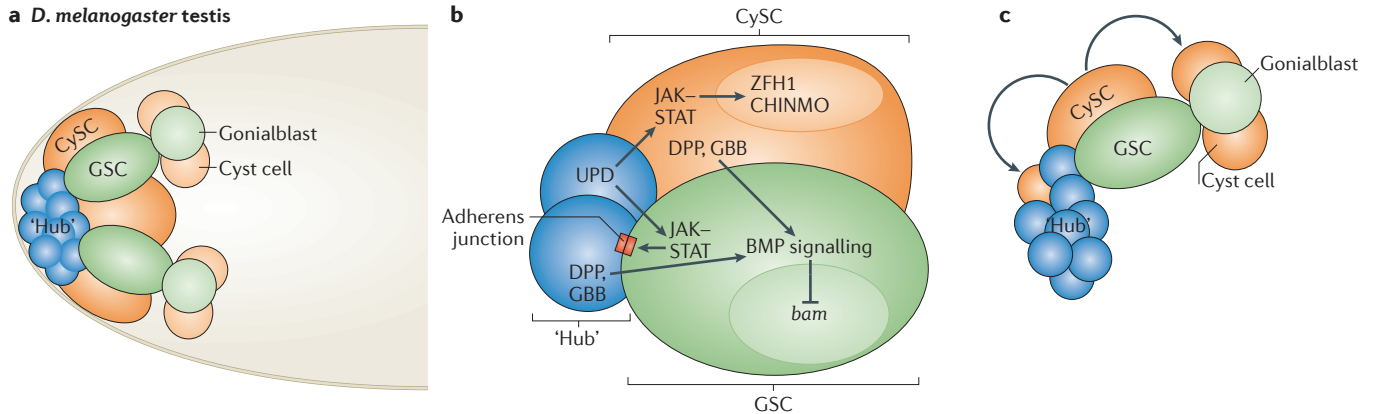


Figure 2 | CySCs contribute to ‘hub’ maintenance. **a** | Structure of the *Drosophila melanogaster* testis. The *D. melanogaster* male germline stem cell niche, located at the apical tip of the testis, hosts two kinds of stem cells: the germline stem cells (GSCs) and the somatic cyst stem cells (CySCs). The ‘hub’ cells at the apical tip are critical niche components. GSCs produce gonialblasts, which undergo synchronous divisions to generate spermatogonia and eventually mature sperm. CySCs generate somatic cyst cells, which surround the gonialblasts and maturing spermatogonia. **b** | A crucial signalling molecule from the hub is Unpaired (UPD), which activates the Janus kinase (JAK)–signal transducer and activator of transcription (STAT) pathway in adjacent CySCs to promote their self-renewal by activating transcription factors ZFH1 (zinc-finger homeodomain 1) and CHINMO (chronologically inappropriate morphogenesis). In GSCs, the JAK–STAT pathway functions to facilitate their attachment to the hub via adherens junctions. In addition, the Bone morphogenetic protein (BMP)–like molecules Decapentaplegic (DPP) and Glass bottom boat (GBB) are secreted from both the hub and the CySCs to activate BMP signalling in GSCs and repress the differentiation factor *bag of marbles* (*bam*). Together, this permits GSC self-renewal. **c** | In some cases, CySCs also generate cells that can contribute to the hub.

Components of the HFSC niche. Why do so many stem cells remain in and near the bulge? One reason is that the bulge offers a rich milieu for various regulatory inputs coming from a diverse array of cell types. Converging on the upper bulge are four different types of sensory neurons, providing a means of coordinating sensory responses in the skin with stem cell behaviour⁵². Additionally, the bulge is encased by blood vessels, providing hormonal and nutrient inputs to stem cells.

Much of what we know about the other components of the niche and their signalling is focused on their relation to HFSC regulation. HFSCs themselves express several secreted factors that regulate their own behaviour^{39,53}. Additionally, several different cell types in and around the bulge niche are likely to participate in regulating HFSC activity (FIG. 3a). Within the niche, MCSCs are immediate HFSC neighbours and likely candidates for crosstalk⁵⁰. In the inner bulge layer, K6⁺ cells are particularly interesting, in that they are progeny of HFSCs and function in maintaining HFSC quiescence⁴⁶. On the other side of the extracellular matrix-rich basement membrane, which separates dermis from epithelium, are counteracting signals that promote stem cell activation and proliferation. A major source of these signals is the dermal papilla, which is located just beneath the hair germ and has long been established as an essential activation centre^{54–56}. The HFSC and hair germ niche is surrounded by a sheath of dermal fibroblasts, which can also provide local activating or inhibitory factors for HFSCs⁵⁷.

Two longer range signalling inputs participate in regulating HFSC behaviours. Subcutaneous adipocytes send out waves of alternating inhibitory and activating factors that help synchronize HFSC niches within the skin⁵⁷. Most recently, adipocyte precursors were implicated in

transmitting regulatory factors that probably signal to receptors on the surface of the dermal papilla and/or dermal sheath⁵⁸. Although we currently understand only a fraction of the extensive crosstalk within these many cell types, the intriguing picture emerging is that multiple niche components regulate stem cell behaviour at different hair cycle stages (see the discussion below on specific cell types and signals involved to drive or inhibit hair growth). It seems likely that many of these cells will also harbour regulatory functions towards other stem cell residents of the bulge.

Activation of HFSCs by dermal niche components. Hair follicles undergo cyclical bouts of growth (anagen), destruction (catagen) and rest (telogen), which are collectively known as the hair cycle⁵⁹. This unique feature has provided insights into the general process of tissue regeneration during homeostasis.

HFSCs remain quiescent throughout most of the hair cycle^{2,3}. At the start of the hair growth phase, HFSCs become activated briefly^{47,60}. Stem cell activation is complex, and the factors involved are still being discovered. Two critical pathways are activation of WNT signalling and inhibition of the BMP pathway. Together, these stabilize nuclear β -catenin in the hair germ and promote hair follicle regeneration^{47,61–69}.

During the quiescent phase of the hair cycle, hair germ cells produce increasing levels of WNTs while the dermal papilla produces increasing levels of BMP inhibitory factors^{47,56}. At the telogen–anagen transition, transforming growth factor- β 2 (TGF β 2) is produced and transmitted by the dermal papilla. Hair germ cells respond by inducing TMEFF1 (transmembrane protein with EGF-like and two follistatin-like domains 1), which inhibits the BMP

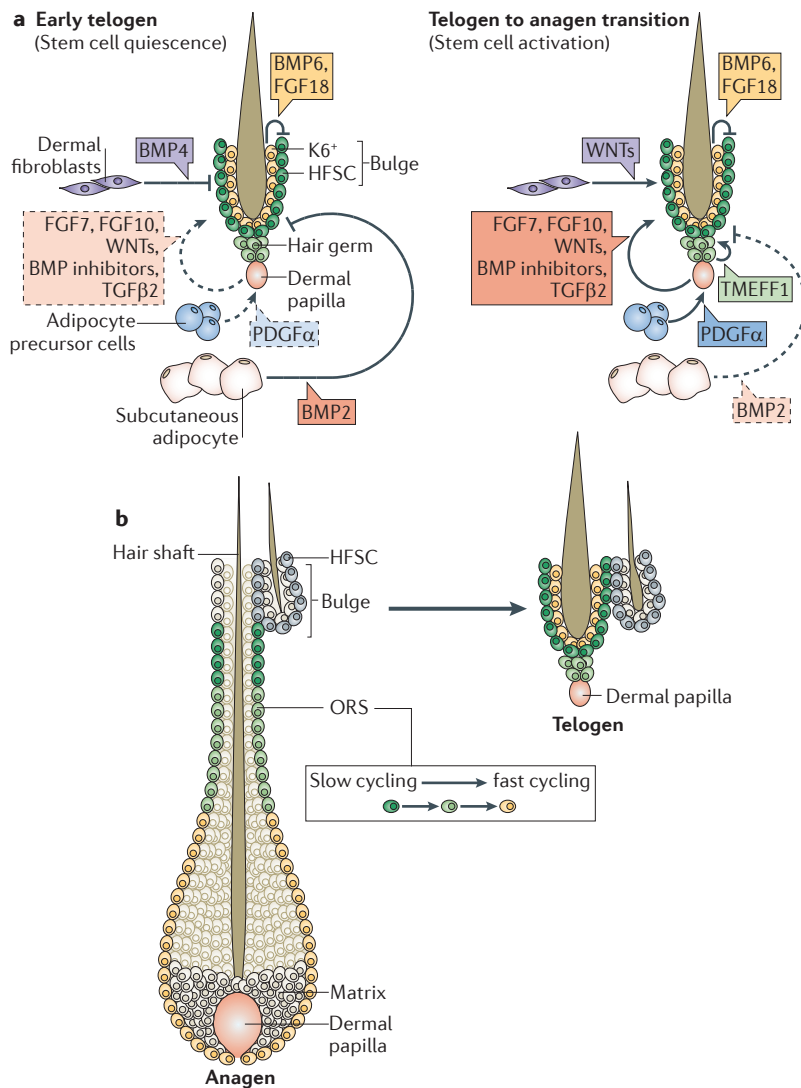


Figure 3 | The HFSC niche: a dynamic interplay between HFSC progeny and dermal components. a | Hair follicle stem cells (HFSCs) reside in the outer bulge layer. Keratin 6-expressing (K6⁺) inner bulge cells are downstream progeny of HFSCs and express high levels of bone morphogenic protein 6 (BMP6) and fibroblast growth factor 18 (FGF18), which are quiescence-inducing factors for HFSCs. During telogen, subcutaneous adipocytes express BMP2 and dermal fibroblasts express BMP4. Near the end of the resting phase, the dermal papilla produces HFSC-activating factors, including FGF7 and FGF10, BMP inhibitors and transforming growth factor- β 2 (TGF β 2) to counteract the inhibitory effects on the niche. TMEFF1 (transmembrane protein with EGF-like and two follistatin-like domains 1) is induced in hair germ cells by TGF β 2 to dampen the suppressive effects of BMPs. In addition, adipocyte precursor cells secrete platelet-derived growth factor- α (PDGF α) to induce the expression of as-yet-unidentified activating factors in the dermal papilla. The macroenvironment of the underlying dermis also participates, progressing to a BMP-low and WNT-high state. **b** | Once activating signals accumulate over a threshold level, HFSCs at the base of the bulge (the hair germ), begin to proliferate to initiate hair growth (anagen). The dermal papilla is pushed away from the bulge, and HFSCs return to quiescence. Two populations of outer root sheath (ORS) cells are spared at catagen and form a new bulge at telogen: the slow-cycling ORS cells close to the old bulge form the new outer bulge layer, and the faster cycling ORS cells nearer to the matrix differentiate and become the new inner K6⁺ bulge layer.

accumulating activation forces transmitted to HFSCs finally overcome strong inhibitory thresholds from other cells within the niche, thereby triggering a new hair cycle. When this happens, the hair germ begins to proliferate and reform the new hair follicle, followed by HFSC proliferation in the bulge 1–2 days later.

HFSCs divide several times as they exit the bulge, forming a downward trail that extends from the bulge along the exterior (the outer root sheath (ORS)) of the regenerating hair follicle. Meanwhile, the dermal papilla is pushed further downward, away from the bulge. As the dermal papilla becomes more distant, bulge and upper ORS cells return to quiescence. Lower ORS cells become increasingly more proliferative as they approach the dermal papilla and change into transient amplifying matrix cells.

In the mature hair follicle, matrix cells envelope the dermal papilla, forming a bulb-like structure at the base. There, transient amplifying matrix cells divide rapidly but transiently before terminally differentiating to produce the new hair and its channel⁷¹. The dynamic movement of the dermal papilla from the bulge to the transient amplifying matrix during the hair cycle may contribute to the prompt return of the HFSCs to quiescence and result in a distinct pool of highly proliferative transient amplifying cells to fuel this tissue-producing factory.

Interactions that resemble those of stem cells in the *D. melanogaster* testis were reported recently as occurring between MCSCs and HFSCs. During anagen onset, WNT signals activated at the bulge base promote MCSC proliferation and differentiation⁵⁰. As activated MCSCs move downwards with the HFSC progeny, they generate pigment, transferring it to the transient amplifying precursors of the hair shaft. This collaboration between HFSCs and MCSCs within the hair follicle offers a valuable mammalian model to probe the interactions and coordination of multiple stem cell types within the same niche.

Feedback signals from progeny switch HFSCs off. Upon exhausting their proliferative potential, the matrix population undergoes apoptosis, triggering catagen that stops hair growth. During this time, most cells within the lower ORS also undergo apoptosis, as the remaining epithelial strand and basement membrane retracts upward, bringing the dermal papilla with it. HFSCs in the upper portion of the ORS are spared and become the new bulge for the next cycle. HFSCs that progressed a bit further along the ORS become the hair germ.

Surprisingly, a few committed cells in the lower ORS also survive catagen. With matrix cells undergoing apoptosis, these ORS cells bypass the transient amplifying step, undergoing an atypical differentiation route and settling in the inner K6⁺ bulge layer (FIG. 3b). Despite retaining many stem cell markers, K6⁺ cells do not function as stem cells during homeostasis or upon wounding. Rather, K6⁺ bulge cells form specialized intercellular junctions that anchor the old hair shaft and prevent the animal from losing all its hairs at the end of the hair cycle. In addition, these cells produce high levels of fibroblast growth factor 18 (FGF18) and BMP6 (REF. 46), which are quiescence

pathway, thereby activating HFSCs⁷⁰. In addition, intra-dermal adipocyte precursors secrete platelet-derived growth factor- α (PDGF α), which further stimulates the mesenchyme surrounding the bulge⁵⁸. Together, these

factors that are also expressed at low levels by HFSCs³⁹. Notably, if K6⁺ bulge cells are either removed through hair plucking or ablated through preferential expression of diphtheria toxin receptor (DTR) followed by diphtheria toxin administration, bulge HFSCs become prematurely activated and enter a new round of hair growth. Importantly, injections of BMP6 or FGF18 prevent this early activation, suggesting that the K6⁺ bulge restricts HFSC activity in part through these factors. This discovery is an example in which stem cell progeny can act as a key signalling centre to stem cells and maintain their quiescence in the niche⁴⁶.

Committed MCSC lineage cells are not known to return back to the bulge at the end of catagen. However, repeated hair plucking, which depletes K6⁺ bulge cells, also results in early hair greying. This could be a sign of MCSC exhaustion owing to overactivation⁷². In the future, it will be interesting to probe deeper into the possible crosstalk between K6⁺ bulge cells and both HFSCs and MCSCs.

Joint efforts of microenvironment and macroenvironment. Once hair follicles re-enter the quiescent phase, both HFSCs and MCSCs can remain dormant for months. During this time, the stimulatory dermal papilla abuts against the HFSCs, hair germ and MCSCs, necessitating strong inhibitory signals from the surrounding environment to maintain stem cell quiescence. In addition to K6⁺ bulge cells, the global dermal macroenvironment, including fibroblasts and subcutaneous adipocytes, secretes BMP2 and BMP4 and contributes to the BMP-high, WNT-low state of the niche at this time. This status progressively changes so that, by the end of telogen, dermal BMP levels decline while WNTs rise^{57,68}. Thus, together with local crosstalk between stem cells and neighbouring niche components, long-range signals from the macroenvironment shift the BMP-high and WNT-low state to a BMP-low and WNT-high one, thereby favouring the telogen to anagen transition. These macroenvironmental cues reinforce synchronized stem cell behaviour across the animal's coat.

In summary, the hair follicle system is an example of how stem cell progeny and heterologous niche cell types either counterbalance each other's effects or cooperate to ensure proper stem cell activity during homeostasis. Moreover, the ability of HFSC progeny to return to the niche and impose regulatory signals to stem cells may provide a paradigm for stem cell niches, which must orchestrate when to make tissue and when to stop. The communication network in this busy corner of the hair follicle appears to be handling quite a cacophony of signalling circuits, and it remains a wonder that the 'wires' do not get crossed.

The mouse intestine

The small intestinal epithelium is among the most rapidly self-renewing tissues in mammals. The entire intestinal epithelium turns over in 3–5 days in a constant effort to fuel the nutritional uptake that maintains the body. This rapid homeostasis is sustained by intestinal stem cells (ISCs).

Coexistence of slow-cycling and fast-cycling ISCs. The G protein-coupled receptor LGR5, is expressed at the bottom of the crypt. A tamoxifen-inducible Cre–oestrogen receptor (Cre–ER) recombinase under control of the *Lgr5* promoter was used to excise a floxed stop codon that otherwise prevents a genetically manipulated *Rosa26–LacZ* locus from being ubiquitously expressed. After Cre–ER activation, βGAL was detected in LGR5⁺ cells and, soon after, in all of their progeny. All cell types within crypts and villi were marked in a long-term manner, suggesting that LGR5⁺ cells are bona fide ISCs and not a transient amplifying population²⁵. Despite proliferative differences between fast-cycling LGR5⁺ ISCs and slow-cycling HFSCs, they share many key stem cell genes, including *Lgr5*, *Sox9* and *Tcf4*. As seen in hair follicles, BMP signalling imposes a quiescence force, whereas WNT signalling is crucial for ISC activation^{73,74}.

Historically, a population of slow-cycling cells (BOX 2) were identified around the fourth position from the bottom of the crypt ('position +4'), above the LGR5⁺ cells⁷⁵. Several proteins mark these slow-cycling cells, such as Polycomb complex subunit BMI1 (REF. 76), telomerase reverse transcriptase (TERT)⁷⁷ and the atypical homeodomain-containing protein HOPX1 (REF. 78). Interestingly, analogous lineage-tracing experiments using *Bmi1–Cre–ER*, *Tert–Cre–ER* or *Hopx1–Cre–ER* to mark the +4 cells have provided compelling evidence that these cells can also generate all cell types within crypts and villi, including the LGR5⁺ cells. Importantly, when the LGR5⁺ cells were ablated, these slow-cycling ISCs expanded in number and efficiently reconstituted the LGR5⁺ population⁷⁹. This apparent functional equivalency and lack of hierarchy suggests that, like the stem cells of the hair follicle and bone marrow, ISCs can transition between slow-cycling and fast-cycling states. In the future, it will be important to determine the relative contributions of these states to tissue formation during homeostasis and upon injury. Given the rapid turnover requirements of the intestinal epithelium, it seems probable that fast-cycling ISCs may contribute more to homeostasis, whereas slow-cycling ISCs are reserved mainly for injury conditions, such as ionizing radiation. A similar situation has previously been described for the haematopoietic system^{26,80}.

Paneth cells regulate the LGR5⁺ ISCs. Which cells are the niche cells for ISCs? Neighbouring mesenchymal cells were initially proposed to be crucial ISC niche stimulants but, thus far, *in situ* hybridization experiments have failed to map specific ISC stimuli to these cells⁸¹. By contrast, recent studies have brought Paneth cells, which are interspersed between the LGR5⁺ ISCs, to the forefront of the candidate list. Paneth cells secrete antimicrobial molecules and have long been known for their defensive roles⁸². Lineage-tracing analyses confirmed that Paneth cells are produced directly by ISCs and, in this regard, they constitute ISC progeny that are located at the crypt niche²⁵.

The relationship between the Paneth cells and the ISC niche has long been postulated. However, it was only recently that researchers demonstrated that Paneth

Crypt

A moat-like tubular invagination of the intestinal epithelium. Crypts contain intestinal stem cells and Paneth cells.

Villi

Finger-like structures that project into the lumen of the intestine. Villi contain the absorptive enterocytes and mucus-secreting goblet cells. These cells live for a few days before they die and are shed from the intestinal epithelium.

Box 2 | Label-retaining assay: facts and myths

A label-retaining assay contains two essential parts: a pulse period and a chase period. Historically, bromo-deoxyuridine (BrdU) or radiolabelled DNA analogues were administered into the animals for a certain time (the pulse) to label all of the proliferating cells. The labelling reagents were then taken away for a prolonged period (the chase) before the tissues were examined. Fast-cycling cells are constantly dividing and dilute the label through each round of division. Therefore, after the chase, their original label is diluted to a degree in which it can no longer be detected. Conversely, slow-cycling cells divide infrequently during the chase period. Therefore, they retain significant amounts of the label and appear as label-retaining cells (LRCs). Recently, a system combining two transgenes, a fluorescent histone (histone H2B labelled with green fluorescent protein (H2B-GFP)) under the control of tetracycline (TET) response element (TRE) and a tissue-specific promoter driving a TET repressor, has been successfully applied to label-retaining assays. When the transgenic animals are fed food containing doxycycline (the chase), synthesis of new H2B-GFP is suppressed, and only infrequently dividing cells retain the H2B-GFP label³.

Label-retaining assays provide a powerful way to delineate the cycling properties within a given population. However, caution must be taken when designing and interpreting the experimental results. First, although many stem cells are slow-cycling, label retention on its own does not imply 'stemness'. In fact, cells that divide during the pulse period and soon withdraw from the cell cycle and differentiate will also appear as LRCs⁴⁶. Moreover, cells with extremely low proliferation kinetics but which do not proliferate during the pulse window will not incorporate the label and hence will be overlooked despite their slow-cycling features. To correctly infer the cycling status of a given cell, label-retaining assays must be combined with careful analysis of cell cycle kinetics. Finally, to demonstrate that a cell is a stem cell, rigorous lineage-tracing assays need to be performed to document long-term tissue-regenerative capacity.

cells might function in ISC maintenance^{83,84}. The first evidence that Paneth cells may be critical ISC niche cells came from *in vitro* studies. By combining Paneth and LGR5⁺ cells in culture, the efficiency of forming organoids that resemble the gut was increased significantly relative to that of LGR5⁺ cells alone⁸³. To show that Paneth cells function similarly *in vivo*, three different mouse models known to affect Paneth cell numbers were used⁸³: a mutation in the zinc-finger protein growth factor-independent 1 (*Gfi1*)⁸⁵; a conditional knockout of *Sox9* (REFS 86,87); and expression of diphtheria toxin under a Paneth cell-specific promoter⁸⁸. When Paneth cell numbers were reduced, the numbers of ISCs were also reduced accordingly (FIG. 4). Interestingly, the remaining ISCs clustered around the surviving Paneth cells⁸³.

It is not yet clear whether Paneth cells act by secreting paracrine factors that sustain ISC survival and/or proliferation or whether they function to suppress ISC differentiation. Transcriptional profiling has revealed that Paneth cells express *Wnt3*, *Egf*, *Tgfa* and Delta-like ligand 4 (*Dll4*), which, at least in culture, are all factors that are important for ISC proliferation and maintenance^{81,89,90}. Among the pathways controlled by these factors, the canonical WNT pathway appears to be the primary signal that promotes intestinal epithelial maintenance, as evidenced by *Tcf4* loss-of-function mutations⁷³ and by recent molecular and genetic links established between WNT receptors and the ISC G protein-coupled receptors LGR5 and LGR4 (REF. 91). The LGR ligands are roof plate-specific spondins (R-spondins), which are known to stimulate WNT- β -catenin signalling^{84,92}. Future studies should aim to demonstrate the *in vivo* relevance of these myriad Paneth-secreting factors and to firmly link these candidate factors to the importance of Paneth cells as key LGR5⁺ ISC niche components. Depletion of candidate factors specifically in the Paneth cells might help to advance this area. However, the capacity of Paneth cells to stimulate the proliferation of ISCs seen *in vitro* suggests that Paneth cells can

no longer be viewed merely as immune surveillance guardians of ISCs.

Although Paneth cells might facilitate ISC self-renewal, this does not exclude the importance of underlying mesenchymal cells. Mesenchymal cells at the crypt-villus border express BMP2 and BMP4, which may halt proliferation and promote differentiation of ISCs at this juncture^{74,93}. Other signals from mesenchymal cells, such as the secreted Frizzled-related proteins (sFRPs), might also attenuate and modulate WNT signalling to prevent over-proliferation of ISCs⁸¹.

Comparisons between the HFSC niche and the ISC niche. When taken together, several interesting commonalities emerge between HFSCs and ISCs. Both are influenced similarly by WNTs and BMPs. In addition, both seem to be responsible for making critical niche components — HFSCs produce the K6⁺ inner bulge cells, and ISCs make the Paneth cells. In this regard, mammalian HFSCs and ISCs seem to differ significantly from *D. melanogaster* CySCs, which might contribute to their own niche only after hub formation.

Despite these similarities, stem cell progeny of the hair follicle and intestine display distinct effects on their self-renewing stem cell parents: K6⁺ bulge cells enhance HFSC quiescence, whereas Paneth cells promote ISC proliferation. These differences also reflect the stereotypical behaviours of the stem cells in their resident compartments: the HFSCs in the bulge are usually in a state of quiescence, whereas ISCs at the crypt base rapidly cycle. Although additional studies are still necessary, it is tempting to speculate that, by designing key niche components from downstream committed progeny, stem cells may receive a blueprint for the cycling behaviour needed for sustaining homeostasis within the tissue. Given that these epithelial tissues must also respond to injury, the ability of stem cells to receive cues from committed progeny adds flexibility to the blueprint, further enabling the stem cells to strike the requisite balance between proliferation and quiescence within their niche.

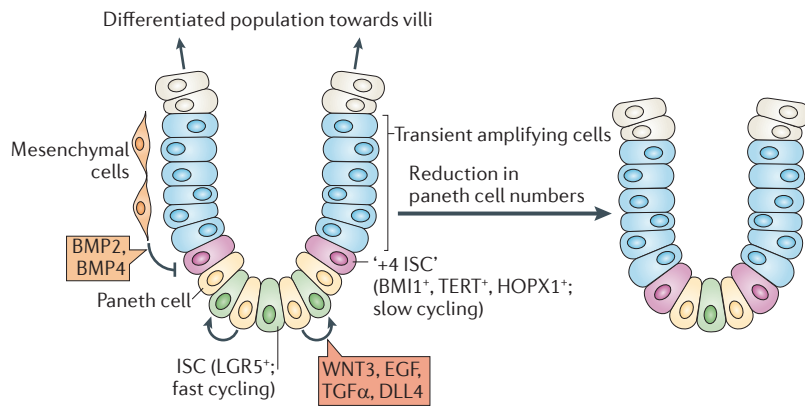


Figure 4 | ISCs generate Paneth cells that promote stem cell proliferation at the base of the intestinal crypt. Lineage-tracing experiments suggest that the Leu-rich repeat-containing G protein-coupled receptor 5-expressing (LGR5⁺) intestinal stem cells (ISCs; shown in green) at the bottom of the crypt generate all of the differentiated lineages of the intestinal epithelium, including their own niche cells — the Paneth cells (shown in yellow). Paneth cells maintain ISCs both *in vitro* and *in vivo*. When Paneth cell numbers are reduced owing to mutations or ablations, the numbers of LGR5⁺ ISCs are also reduced accordingly, and the remaining ISCs cluster around the leftover ISCs. WNT3, epidermal growth factor (EGF), transforming growth factor- α (TGF α) and Delta-like ligand 4 (DLL4) are all factors expressed by the Paneth cells and known to influence the maintenance of ISCs either *in vivo* or *in vitro*. A slow-cycling population of ISCs, commonly referred to as the '+4 ISCs' owing to their position fourth from the bottom of the crypt (shown in purple), are located at the periphery of the Paneth cell-rich zone and nearest to the bone morphogenic protein (BMP)-expressing mesenchymal cells. Several genes have been identified to be expressed at these cells, including those encoding Polycomb complex subunit BMI1, telomerase reverse transcriptase (TERT) and atypical homeodomain-containing protein HOPX1. Their unique location might also contribute to their slow-cycling status.

Myeloid

A lineage containing macrophages, monocytes, neutrophils, basophils, eosinophils, erythrocytes, megakaryocytes and dendritic cells.

Lymphoid

A lineage containing all of the T cells, B cells and natural killer cells.

Myelofibrosis

A disease in which fibrous scars accumulate in the bone marrow cavity.

Non-myelinating Schwann cells

Schwann cells are the glia cells of the peripheral nerve system. Non-myelinating Schwann cells lack a myelin sheath. They are often found to wrap around axons with a smaller diameter and are important for the survival and function of neurons

Endosteal lining

A thin layer of connective tissue that lines the medullary cavity of a bone.

It is also worth noting that HFSC or ISC populations with different cycling properties are positioned at distinct locations, which might reinforce their cycling behaviours: in contrast to the bulge HFSCs, the cells of the hair germ do not make direct cell–cell contact with inhibitory K6⁺ bulge cells, but rather they are adjacent to the dermal papilla activation centre. Similarly, the +4 slow-cycling ISCs reside above the proliferation-promoting Paneth cells and are closer to the BMP-expressing mesenchymal cells at the crypt–villus border. Such features suggest that microenvironment has an impact on stem cell activity.

The haematopoietic system

Thus far, we have introduced several examples in which the progeny of stem cells regulate the cycling frequencies of their parents. The haematopoietic stem cell (HSC) system brings new complexities to the relationship between stem cells and their niches. Most adult HSCs reside in bone marrow^{23,24}, where they become activated to replenish the myeloid and lymphoid lineages of the blood and the immune system⁹⁴. Unlike most other stem cells, which reside either within their niche or within a relatively limited range of travelling distance surrounding the niche, HSCs are extraordinarily mobile. During homeostasis, HSCs often travel from one bone marrow compartment to another⁹⁵. Under stress conditions when the bone marrow cannot sustain sufficient haematopoiesis, such as in myelofibrosis, HSCs can even travel to the spleen or liver.

The HSC niche. Accompanying the unusually mobile and dynamic nature of its key residents is a complexity to the HSC niche that has not been seen in other stem cell systems. In addition to well-established niche components, such as osteoblasts and bone marrow vasculature^{21,96–100}, osteoblast progenitors, adipocytes, mesenchymal cells and non-myelinating Schwann cells within the bone marrow have recently been shown to influence HSC behaviour^{101–105}.

It has also been postulated that the location of HSCs directly affects their cycling behaviour, presumably because of the different environmental stimuli they encounter at each location. In this regard, live-imaging studies suggest that HSCs are more quiescent when they are closer to the endosteal lining, which is enriched for osteoblasts, osteoclasts and stromal fibroblasts. By contrast, more active HSCs tend to be closer to the perivascular niche, which is more centrally located within the bone marrow and marked by perivascular mesenchymal stem cells (MSCs), sinusoid endothelial cells and neural cells^{23,24}.

As the number of cell types known to regulate HSCs continues to increase, dissecting the complex crosstalk involved and the differentiation status of other niche lineage cells becomes a major challenge. Osteoblasts were among the first niche residents to be characterized. Paralleling the Paneth cell–ISC connection, when osteoblast numbers are increased, HSCs expand concomitantly^{96,97}. Conversely, depletion of osteoblasts results in a loss of HSCs^{106,107}. By contrast, osteoclasts seem to be dispensable for HSC maintenance¹⁰⁸. The most dormant, long-lived HSCs seem to reside next to osteoblast progenitor cells (which are known as preosteoblasts). Further supporting a functional role for these progenitors in regulating HSC dormancy, mutational loss of microRNA processing in preosteoblasts, but not in mature osteoblasts, causes HSC hyperproliferation, aberrant haematopoiesis and myelodysplasia¹⁰⁴.

On the perivascular side of HSC niche components are nestin⁺ MSCs, which influence HSC migration and maintenance (see below)¹⁰². CXCL12-abundant reticular cells (CAR cells) also affect HSC numbers¹⁰³. These cells may partially overlap with nestin⁺ MSCs on the perivascular side but have also been seen in the endosteum. Finally, non-myelinating Schwann cells appear to maintain HSC quiescence by regulating latent TGF β activation¹⁰⁵. This is in contrast to the function of TGF β in the hair follicle niche, where active TGF β seems to activate HFSCs⁷⁰. Although much is still to be learned about these signalling networks, it is already clear that different cell types within both endosteal and perivascular compartments influence HSC behaviour in multifaceted ways (FIG. 5a).

HSC progeny are HSC regulators. Regulatory T cells (T_{Reg} cells) are a type of HSC progeny in the lymphoid lineage. They are critical for suppressing immune responses and confining tolerance to self-antigens. T_{Reg} cells also mediate immune response suppression at specific immune-privileged sites, where introduction of foreign antigens is tolerated without eliciting an inflammatory immune response.

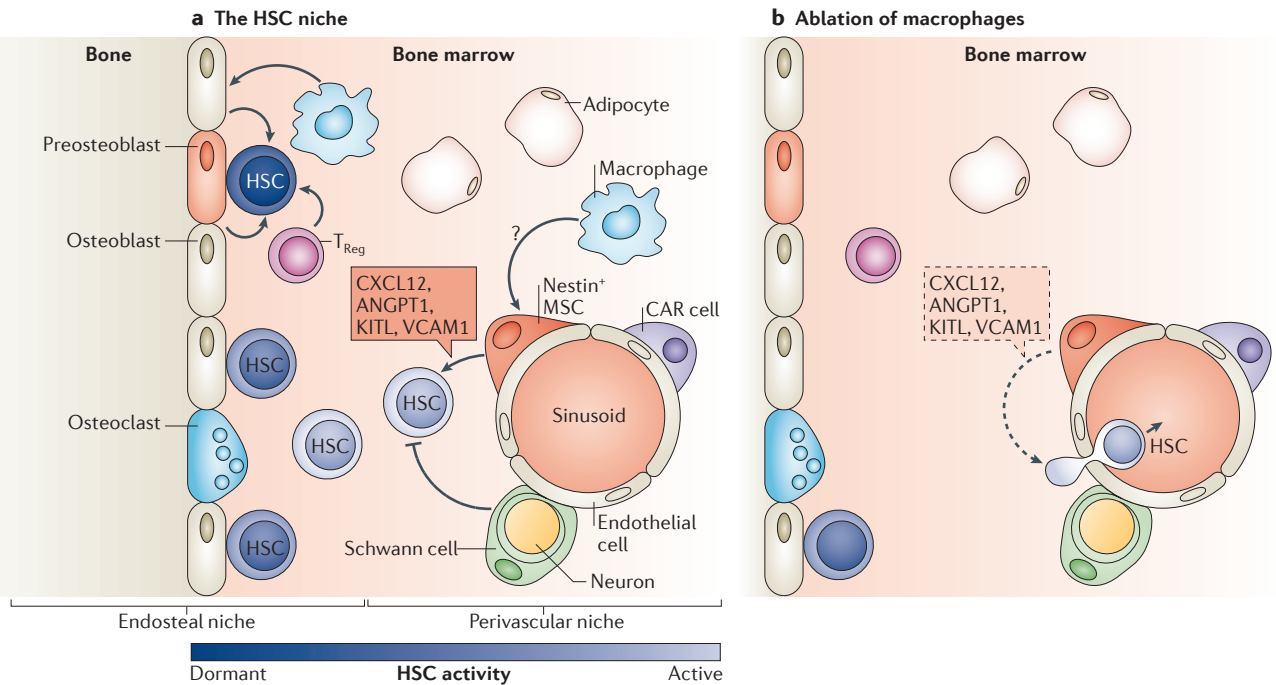


Figure 5 | The HSC niche: a rich and complex environment. a | Most haematopoietic stem cells (HSCs) reside in the bone marrow, which can be subdivided into endosteal and perivascular niches. HSCs located on the endosteal side tend to be more quiescent, whereas HSCs located at the perivascular side are more active. The most dormant HSCs have been reported to locate near osteoblast progenitors (preosteoblasts). With the exception of osteoclasts, all of the cellular components in the diagram have been reported to modulate HSC behaviour. Two of the downstream HSC progeny, regulatory T cells (T_{Reg} cells) and macrophages, participate in HSC regulation. T_{Reg} cells guard HSCs by making the endosteal niche a possible immune-privileged site, thereby protecting HSCs from immune attack. Macrophages are critical for maintaining HSCs in their bone marrow niche. They appear to do so through an indirect mechanism mediated by nestin⁺ mesenchymal stem cells (MSCs) and possibly by osteoblasts. **b** | Ablation of bone marrow macrophages reduces the levels of several key maintenance factors for HSCs, such as CXC chemokine ligand 12 (CXCL12), angiopoietin 1 (ANGPT1), KIT ligand (KITL) and vascular cell adhesion molecule 1 (VCAM1), that are expressed in paracrine by the nestin⁺ MSCs. Exactly how macrophages signal to the nestin⁺ MSCs to govern this exchange of signals remains to be identified (and thus is represented by a question mark). CAR cell, CXCL12-abundant reticular cell.

Immune privilege is thought to be an adaptation that protects vital structures from deleterious damage caused by inflammation. As stem cells are crucial for tissue regeneration, it has been speculated that they might reside within immune-privileged sites. At least for HSCs, this seems to be the case. Thus, transplanted HSCs survive in the bone marrow of non-irradiated syngeneic and allogeneic recipients without eliciting immune response. This effect seems to be attributable to T_{Reg} cells within the bone marrow, as their depletion results in fewer surviving donor HSCs. In this regard, T_{Reg} cells may act as a shield for HSCs, protecting them from immune attack¹⁰⁹.

On the side of myeloid lineage progeny, macrophages also provide interesting feedback to HSCs. It appears that the movement of HSCs is regulated by macrophages located in the bone marrow^{110,111}. Two independent groups used conceptually similar but technically different ablation approaches to study these macrophages. Winkler and colleagues¹¹⁰ targeted ablation of macrophages by two methods: intravenous injection of clodronate-loaded liposomes, which are taken up by macrophages; and a transgenic model that triggered macrophages to undergo FAS-induced apoptosis.

Chow and colleagues¹¹¹ used a CD169-DTR model that expressed DTR in a subset of macrophages, enabling them to induce depletion upon injection with diphtheria toxin. Although different ablation approaches might target different subtypes of macrophages, both groups found that, when macrophages are depleted, large numbers of HSCs mobilize from their bone marrow niche and enter the peripheral bloodstream (FIG. 5b).

How do macrophages influence the localization of HSCs? Although the exact mechanism remains to be elucidated, current evidence suggests that they do so through an indirect fashion. On the perivascular side, this effect seems to involve the nestin⁺ MSCs in the bone marrow. Purified HSCs home near these nestin⁺ MSCs when transplanted into hosts and, conversely, depletion of nestin⁺ MSCs rapidly diminishes HSC numbers¹⁰². Upon depletion of macrophages, several genes implicated in HSC retention or maintenance are specifically downregulated within nestin⁺ MSCs residing within the bone marrow¹¹¹. These include the genes encoding the secreted factors CXC chemokine ligand 12 (CXCL12; also known as SDF1), angiopoietin 1 (ANGPT1), KIT ligand (KITL; also known as stem cell factor and steel factor) and vascular cell adhesion molecule 1

Mesenchymal stem cells (MSCs). Multipotent stem cells capable of giving rise to a wide range of mesenchymal cells, including adipocytes, chondrocytes and osteoblasts.

Myelodysplasia
A group of disorders in which the bone marrow does not function normally and insufficient numbers of blood cells are produced.

Syngeneic
When donors are genetically identical or at least immunologically compatible with recipients.

Allogeneic
When donors are from the same species but are genetically different from recipients.

(VCAM1), and their downregulation suggests that macrophages may affect HSC retention through regulating critical retention factors in nestin⁺ MSCs. On the endosteal side, ablation of macrophages may affect osteoblast numbers, thereby making the bone marrow cavity a less favourable site for HSCs^{110,112}. The next important step will be to delineate the signals sent from macrophages to nestin⁺ MSCs and/or osteoblasts to control HSC retention within the bone marrow.

The example of macrophages and HSCs unveils yet another intriguing mechanism for how progeny can influence stem cells. In this case, instead of affecting stem cells directly, the progeny first have an impact on other heterologous niche cell types within the microenvironment and this then affects the behaviour of stem cells. Given the coexistence of multiple heterologous cell types within various stem cell niches, additional examples of these intricate circuits are likely to unfold in the future.

Conclusions and perspectives

In this Review, we present a range of recent examples illustrating how progeny can provide important and diversified feedback mechanisms to regulate their stem cell parents. Together with heterologous niche cell types, they create a unique microenvironment to host the stem cells. Given that the main function of stem cells is to generate tissue, the generation of feedback signals from differentiated progeny to regulate stem cell behaviour becomes a robust strategy to control tissue homeostasis. In the case of the intestine, the equilibrium between ISCs and Paneth cells ensures that a constant number of stem cells are maintained in the face of rapid tissue regeneration. In the case of the hair follicle, the stop signal imparted to stem cells by the K6⁺ bulge cells at the end of the hair cycle provides an explanation for how the stem cell niche can remain dormant in telogen for weeks on end despite stimulatory cues from the dermal papilla. It also provides an intriguing insight into why hairs grow back again when plucked and why skin tumours, for example squamous cell carcinomas, which lack the inner bulge structure, might unleash a more proliferative state to their malignant stem cell residents.

A final note that is worthy of mention is the advantage of this regulatory circuitry in wound repair. Most tissues of the body must mobilize stem cells quickly in response to injury. But, once the tissue has been repaired, the stem cells must also be able to return to their normal proliferative state. The dependency of stem cells on their downstream progeny provides a natural means for telling stem cells when to expand tissue growth and when to stop during normal homeostasis. Upon wounding, when these regulatory progeny are damaged, the niche environment changes accordingly, allowing stem cells to take immediate action and repair the tissue.

Given the near-universal requirement to precisely control stem cell activity in adult tissues, the examples we present here are likely to be the ‘tip of the iceberg’ in the study of niche dynamics between stem cells and their progeny. Studies regarding stem cell niches are increasingly unravelling new concepts in basic stem cell biology and are beginning to have an impact on regenerative medicine. And stem cell progeny have surfaced as indispensable components that researchers must take into account when trying to tease out the complexity of the niche. With increasing evidence that tumour-initiating, or so-called cancer stem cells, also partake in extensive dialogue with their surroundings, it seems that it is just a matter of time before incidences of crosstalk between cancer stem cells and their local downstream progeny emerge. By better understanding the niche composition and mapping the signals within the microenvironment with higher precision, it may be possible in the future to harness this information and design effective strategies to promote stem cell proliferation and regeneration following injury or degeneration, and to restrict it in malignant progression.

Note added in proof

While this review was in press, a study was published reporting a feedback regulation by progeny in the *D. melanogaster* haematopoietic niche. Signals from differentiating haemocytes were found to regulate haematopoietic progenitor quiescence¹¹⁷. This provides yet another example of this emerging regulatory mechanism governing stem cell behaviours in their niches.

- Morris, R. J. & Potten, C. S. Highly persistent label-retaining cells in the hair follicles of mice and their fate following induction of anagen. *J. Invest. Dermatol.* **112**, 470–475 (1999).
- Cotsarelis, G., Sun, T. T. & Lavker, R. M. Label-retaining cells reside in the bulge area of pilosebaceous unit: implications for follicular stem cells, hair cycle, and skin carcinogenesis. *Cell* **61**, 1329–1337 (1990).
Marks slow-cycling cells located in the bulge region and suggests that they might be HFSCs.
- Tumbar, T. *et al.* Defining the epithelial stem cell niche in skin. *Science* **303**, 359–363 (2004).
Describes the generation of a mouse model combining two transgenes to fluorescently tag slow-cycling cells, which has been widely applied to other systems, including the HSCs as in references 26 and 80. Also reports the transcriptional profiling that identified genes preferentially expressed by HFSCs.
- Gros, J., Manceau, M., Thome, V. & Marcelle, C. A common somitic origin for embryonic muscle progenitors and satellite cells. *Nature* **435**, 954–958 (2005).
- Collins, C. A. *et al.* Stem cell function, self-renewal, and behavioral heterogeneity of cells from the adult muscle satellite cell niche. *Cell* **122**, 289–301 (2005).
- Doetsch, F., Caille, I., Lim, D. A., Garcia-Verdugo, J. M. & Alvarez-Buylla, A. Subventricular zone astrocytes are neural stem cells in the adult mammalian brain. *Cell* **97**, 703–716 (1999).
- Zhang, C. L., Zou, Y., He, W., Gage, F. H. & Evans, R. M. A role for adult TLX-positive neural stem cells in learning and behaviour. *Nature* **451**, 1004–1007 (2008).
- Conboy, I. M. & Rando, T. A. The regulation of Notch signaling controls satellite cell activation and cell fate determination in postnatal myogenesis. *Dev. Cell* **3**, 397–409 (2002).
- Villeda, S. A. *et al.* The ageing systemic milieu negatively regulates neurogenesis and cognitive function. *Nature* **477**, 90–94 (2011).
- Fuchs, E. The tortoise and the hair: slow-cycling cells in the stem cell race. *Cell* **137**, 811–819 (2009).
- Li, L. H. & Clevers, H. Coexistence of quiescent and active adult stem cells in mammals. *Science* **327**, 542–545 (2010).
- Bonnet, D. & Dick, J. E. Human acute myeloid leukemia is organized as a hierarchy that originates from a primitive hematopoietic cell. *Nature Med.* **3**, 730–737 (1997).
- Yilmaz, O. H. *et al.* Pten dependence distinguishes haematopoietic stem cells from leukaemia-initiating cells. *Nature* **441**, 475–482 (2006).
- Barabe, F., Kennedy, J. A., Hope, K. J. & Dick, J. E. Modeling the initiation and progression of human acute leukemia in mice. *Science* **316**, 600–604 (2007).
- Schober, M. & Fuchs, E. Tumor-initiating stem cells of squamous cell carcinomas and their control by TGF-β and integrin/focal adhesion kinase (FAK) signaling. *Proc. Natl Acad. Sci. USA* **108**, 10544–10549 (2011).
- Schofield, R. The relationship between the spleen colony-forming cell and the haematopoietic stem cell. *Blood Cells* **4**, 7–25 (1978).
Postulates the existence of a stem cell niche.

17. Xie, T. & Spradling, A. C. A niche maintaining germ line stem cells in the *Drosophila* ovary. *Science* **290**, 328–330 (2000).
18. Kiger, A. A., Jones, D. L., Schulz, C., Rogers, M. B. & Fuller, M. T. Stem cell self-renewal specified by JAK–STAT activation in response to a support cell cue. *Science* **294**, 2542–2545 (2001).
19. Tulina, N. & Matunis, E. Control of stem cell self-renewal in *Drosophila* spermatogenesis by JAK–STAT signaling. *Science* **294**, 2546–2549 (2001).
References 17–19 demonstrate the existence of niches for *D. melanogaster* germline stem cells and describe the signalling events involved. Reference 17 identifies ‘cap cells’ as key GSC niche components in the ovary. References 18 and 19 define the hub as the niche for testis GSCs.
20. Rendl, M., Lewis, L. & Fuchs, E. Molecular dissection of mesenchymal-epithelial interactions in the hair follicle. *PLoS Biol.* **3**, e351 (2005).
21. Kiel, M. J. *et al.* SLAM family receptors distinguish hematopoietic stem and progenitor cells and reveal endothelial niches for stem cells. *Cell* **121**, 1109–1121 (2005).
22. Chan, C. K. F. *et al.* Endochondral ossification is required for haematopoietic stem-cell niche formation. *Nature* **457**, 490–494 (2009).
23. Lo Celso, C. *et al.* Live-animal tracking of individual haematopoietic stem/progenitor cells in their niche. *Nature* **457**, 92–96 (2009).
24. Xie, Y. C. *et al.* Detection of functional haematopoietic stem cell niche using real-time imaging. *Nature* **457**, 97–101 (2009).
References 23 and 24 apply live-imaging techniques to visualize mouse HSCs in their native bone marrow niches. Reference 24 images murine bones *ex vivo*, whereas reference 23 takes an *in vivo* approach to image cells within the bone marrow.
25. Barker, N. *et al.* Identification of stem cells in small intestine and colon by marker gene *Lgr5*. *Nature* **449**, 1003–1007 (2007).
Shows, using Cre–ER–Rosa–LacZ lineage tracing that LGR5⁺ cells at the crypt base are fast-cycling ISCs.
26. Wilson, A. *et al.* Hematopoietic stem cells reversibly switch from dormancy to self-renewal during homeostasis and repair. *Cell* **135**, 1118–1129 (2008).
27. Buch, T. *et al.* A Cre-inducible diphtheria toxin receptor mediates cell lineage ablation after toxin administration. *Nature Methods* **2**, 419–426 (2005).
28. Fuller, M. T. & Spradling, A. C. Male and female *Drosophila* germline stem cells: two versions of immortality. *Science* **316**, 402–404 (2007).
29. Kiger, A. A., White-Cooper, H. & Fuller, M. T. Somatic support cells restrict germline stem cell self-renewal and promote differentiation. *Nature* **407**, 750–754 (2000).
30. Leatherman, J. L. & Dinardo, S. Zfh-1 controls somatic stem cell self-renewal in the *Drosophila* testis and nonautonomously influences germline stem cell self-renewal. *Cell Stem Cell* **3**, 44–54 (2008).
31. Flaherty, M. S. *et al.* *chinmo* is a functional effector of the JAK/STAT pathway that regulates eye development, tumor formation, and stem cell self-renewal in *Drosophila*. *Dev. Cell* **18**, 556–568 (2010).
32. Issigonis, M. *et al.* JAK–STAT signal inhibition regulates competition in the *Drosophila* testis stem cell niche. *Science* **326**, 153–156 (2009).
33. Leatherman, J. L. & DiNardo, S. Germline self-renewal requires cyst stem cells and stat regulates niche adhesion in *Drosophila* testes. *Nature Cell Biol.* **12**, 806–811 (2010).
34. Kawase, E., Wong, M. D., Ding, B. C. & Xie, T. Gbb/Bmp signaling is essential for maintaining germline stem cells and for repressing *bam* transcription in the *Drosophila* testis. *Development* **131**, 1365–1375 (2004).
35. Voog, J., D’Alterio, C. & Jones, D. L. Multipotent somatic stem cells contribute to the stem cell niche in the *Drosophila* testis. *Nature* **454**, 1132–1136 (2008).
36. Harrison, D. A. & Perrimon, N. Simple and efficient generation of marked clones in *Drosophila*. *Curr. Biol.* **3**, 424–433 (1993).
37. Dinardo, S., Okegbe, T., Wingert, L., Freilich, S. & Terry, N. *lines* and *bow* affect the specification of cyst stem cells and niche cells in the *Drosophila* testis. *Development* **138**, 1687–1696 (2011).
References 35 and 37 demonstrate that, under some circumstances, progeny of CySCs can differentiate into hub cells. Reference 35 observes this contribution during steady state. Reference 37 observes this conversion mainly when the CySCs carry mutations in the *lines* gene.
38. Morris, R. J. *et al.* Capturing and profiling adult hair follicle stem cells. *Nature Biotech.* **22**, 411–417 (2004).
39. Blanpain, C., Lowry, W. E., Geoghegan, A., Polak, L. & Fuchs, E. Self-renewal, multipotency, and the existence of two cell populations within an epithelial stem cell niche. *Cell* **118**, 635–648 (2004).
Similarly to reference 3, references 38 and 39 delineate transcriptional profiling that identified genes preferentially expressed by HFSCs.
40. Vidal, V. P. *et al.* Sox9 is essential for outer root sheath differentiation and the formation of the hair stem cell compartment. *Curr. Biol.* **15**, 1340–1351 (2005).
41. Nowak, J. A., Polak, L., Pasolunghi, H. A. & Fuchs, E. Hair follicle stem cells are specified and function in early skin morphogenesis. *Cell Stem Cell* **3**, 33–43 (2008).
42. Rhee, H., Polak, L. & Fuchs, E. Lhx2 maintains stem cell character in hair follicles. *Science* **312**, 1946–1949 (2006).
43. Nguyen, H. *et al.* Tcf3 and Tcf4 are essential for long-term homeostasis of skin epithelia. *Nature Genet.* **41**, 1068–1075 (2009).
44. Nguyen, H., Rendl, M. & Fuchs, E. Tcf3 governs stem cell features and represses cell fate determination in skin. *Cell* **127**, 171–183 (2006).
45. Horsley, V., Aliprantis, A. O., Polak, L., Glimcher, L. H. & Fuchs, E. NFATc1 balances quiescence and proliferation of skin stem cells. *Cell* **132**, 299–310 (2008).
46. Hsu, Y. C., Pasolunghi, H. A. & Fuchs, E. Dynamics between stem cells, niche, and progeny in the hair follicle. *Cell* **144**, 92–105 (2011).
Details combinatorial pulse-chase and lineage-tracing experiments to monitor HFSCs after exiting the bulge. Reveals that some committed HFSC progeny return to the niche and confer inhibitory signals that help maintain HFSC quiescence in the bulge.
47. Greco, V. *et al.* A two-step mechanism for stem cell activation during hair regeneration. *Cell Stem Cell* **4**, 155–169 (2009).
48. Nishimura, E. K. *et al.* Dominant role of the niche in melanocyte stem-cell fate determination. *Nature* **416**, 854–860 (2002).
49. Tanimura, S. *et al.* Hair follicle stem cells provide a functional niche for melanocyte stem cells. *Cell Stem Cell* **8**, 177–187 (2011).
50. Rabbani, P. *et al.* Coordinated activation of *wnt* in epithelial and melanocyte stem cells initiates pigmented hair regeneration. *Cell* **145**, 941–955 (2011).
51. Fujiwara, H. *et al.* The basement membrane of hair follicle stem cells is a muscle cell niche. *Cell* **144**, 577–589 (2011).
52. Brownell, I., Guevara, E., Bai, C. B., Loomis, C. A. & Joyner, A. L. Nerve-derived Sonic hedgehog defines a niche for hair follicle stem cells capable of becoming epidermal stem cells. *Cell Stem Cell* **8**, 552–565 (2011).
53. Lien, W. H. *et al.* Genome-wide maps of histone modifications unwind *in vivo* chromatin states of the hair follicle lineage. *Cell Stem Cell* **9**, 219–232 (2011).
54. Rendl, M., Polak, L. & Fuchs, E. BMP signaling in dermal papilla cells is required for their hair follicle-inductive properties. *Genes Dev.* **22**, 543–557 (2008).
55. Enshell-Seijffers, D., Lindon, C., Kashiwagi, M. & Morgan, B. A. β -catenin activity in the dermal papilla regulates morphogenesis and regeneration of hair. *Dev. Cell* **18**, 633–642 (2010).
56. Botchkarev, V. A. *et al.* Noggin is a mesenchymally derived stimulator of hair-follicle induction. *Nature Cell Biol.* **1**, 158–164 (1999).
57. Plikus, M. V. *et al.* Cyclic dermal BMP signalling regulates stem cell activation during hair regeneration. *Nature* **451**, 340–344 (2008).
58. Festa, E. *et al.* Adipocyte lineage cells contribute to the skin stem cell niche to drive hair cycling. *Cell* **146**, 761–771 (2011).
59. Muller-Rover, S. *et al.* A comprehensive guide for the accurate classification of murine hair follicles in distinct hair cycle stages. *J. Invest. Dermatol.* **117**, 3–15 (2001).
60. Zhang, Y. V., Cheong, J., Ciapurin, N., McDermitt, D. J. & Tumber, T. Distinct self-renewal and differentiation phases in the niche of infrequently dividing hair follicle stem cells. *Cell Stem Cell* **5**, 267–278 (2009).
61. Gat, U., DasGupta, R., Degenstein, L. & Fuchs, E. *De novo* hair follicle morphogenesis and hair tumors in mice expressing a truncated β -catenin in skin. *Cell* **95**, 605–614 (1998).
62. Lo Celso, C., Prowse, D. M. & Watt, F. M. Transient activation of β -catenin signalling in adult mouse epidermis is sufficient to induce new hair follicles but continuous activation is required to maintain hair follicle tumours. *Development* **131**, 1787–1799 (2004).
63. Van Mater, D., Kolligs, F. T., Dlugosz, A. A. & Fearon, E. R. Transient activation of β -catenin signaling in cutaneous keratinocytes is to trigger the active growth phase of the hair cycle in mice. *Genes Dev.* **17**, 1219–1224 (2003).
64. Kobiela, K., Stokes, N., de la Cruz, J., Polak, L. & Fuchs, E. Loss of a quiescent niche but not follicle stem cells in the absence of bone morphogenetic protein signaling. *Proc. Natl Acad. Sci. USA* **104**, 10063–10068 (2007).
65. Jamora, C., DasGupta, R., Koceniowski, P. & Fuchs, E. Links between signal transduction, transcription and adhesion in epithelial bud development. *Nature* **422**, 317–322 (2003).
66. Zhang, J. W. *et al.* Bone morphogenetic protein signaling inhibits hair follicle anagen induction by restricting epithelial stem/progenitor cell activation and expansion. *Stem Cells* **24**, 2826–2839 (2006).
67. Andl, T. *et al.* Epithelial *Bmpr1a* regulates differentiation and proliferation in postnatal hair follicles and is essential for tooth development. *Development* **131**, 2257–2268 (2004).
68. Plikus, M. V. *et al.* Self-organizing and stochastic behaviors during the regeneration of hair stem cells. *Science* **332**, 586–589 (2011).
69. Ito, M. *et al.* Wnt-dependent *de novo* hair follicle regeneration in adult mouse skin after wounding. *Nature* **447**, 316–320 (2007).
70. Oshimori, N. & Fuchs, E. Paracrine TGF- β signaling counterbalances BMP-mediated repression in hair follicle stem cell activation. *Cell Stem Cell* **10**, 63–75 (2012).
71. Oshima, H., Rochat, A., Kedzia, C., Kobayashi, K. & Barrandon, Y. Morphogenesis and renewal of hair follicles from adult multipotent stem cells. *Cell* **104**, 233–245 (2001).
72. Inoue-Narita, T. *et al.* Pten deficiency in melanocytes results in resistance to hair graying and susceptibility to carcinogen-induced melanomagenesis. *Cancer Res.* **68**, 5760–5768 (2008).
73. Korinek, V. *et al.* Depletion of epithelial stem-cell compartments in the small intestine of mice lacking Tcf-4. *Nature Genet.* **19**, 379–383 (1998).
74. He, X. C. *et al.* BMP signaling inhibits intestinal stem cell self-renewal through suppression of Wnt- β -catenin signaling. *Nature Genet.* **36**, 1117–1121 (2004).
75. Potten, C. S., Owen, G. & Booth, D. Intestinal stem cells protect their genome by selective segregation of template DNA strands. *J. Cell. Sci.* **115**, 2381–2388 (2002).
76. Sangiorgi, E. & Capocchi, M. R. Bmi1 is expressed *in vivo* in intestinal stem cells. *Nature Genet.* **40**, 915–920 (2008).
77. Montgomery, R. K. *et al.* Mouse telomerase reverse transcriptase (mTert) expression marks slowly cycling intestinal stem cells. *Proc. Natl Acad. Sci. USA* **108**, 179–184 (2011).
78. Takeda, N. *et al.* Interconversion between intestinal stem cell populations in distinct niches. *Science* **334**, 1420–1424 (2011).
Applying similar strategies to reference 25, references 76–78 show that slow-cycling cells located at the +4 position are also ISCs. Reference 78 shows that the two ISC populations are interchangeable.
79. Tian, H. *et al.* A reserve stem cell population in small intestine renders Lgr5-positive cells dispensable. *Nature* **478**, 255–259 (2011).
80. Foudi, A. *et al.* Analysis of histone 2B–GFP retention reveals slowly cycling hematopoietic stem cells. *Nature Biotech.* **27**, 84–90 (2009).
81. Gregorieff, A. *et al.* Expression pattern of Wnt signaling components in the adult intestine. *Gastroenterology* **129**, 626–638 (2005).
82. Porter, E. M., Bevins, C. L., Ghosh, D. & Ganz, T. The multifaceted Paneth cell. *Cell. Mol. Life Sci.* **59**, 156–170 (2002).

83. Sato, T. *et al.* Paneth cells constitute the niche for Lgr5 stem cells in intestinal crypts. *Nature* **469**, 415–418 (2011).
Shows that, when Paneth cell numbers are reduced by either mutations or ablations, LGR5⁺ ISC numbers are reduced concomitantly, suggesting an interdependency of ISCs on one of their downstream lineages.
84. Mustata, R. C. *et al.* Lgr4 is required for Paneth cell differentiation and maintenance of intestinal stem cells *ex vivo*. *EMBO Rep.* **12**, 558–564 (2011).
85. Shroyer, N. F., Wallis, D., Venken, K. J. T., Bellen, H. J. & Zoghbi, H. Y. *Gfi1* functions downstream of *Math1* to control intestinal secretory cell subtype allocation and differentiation. *Genes Dev.* **19**, 2412–2417 (2005).
86. Bastide, P. *et al.* Sox9 regulates cell proliferation and is required for Paneth cell differentiation in the intestinal epithelium. *J. Cell Biol.* **178**, 635–648 (2007).
87. Mori-Akiyama, Y. *et al.* SOX9 is required for the differentiation of paneth cells in the intestinal epithelium. *Gastroenterology* **133**, 539–546 (2007).
88. Garabedian, E. M., Roberts, L. J. J., McNeven, M. S. & Gordon, J. I. Examining the role of Paneth cells in the small intestine by lineage ablation in transgenic mice. *J. Biol. Chem.* **272**, 23729–23740 (1997).
89. van der Flier, L. G. *et al.* Transcription factor achaete scute-like 2 controls intestinal stem cell fate. *Cell* **136**, 903–912 (2009).
90. Sato, T. *et al.* Single Lgr5 stem cells build crypt–villus structures *in vitro* without a mesenchymal niche. *Nature* **459**, 262–265 (2009).
91. de Lau, W. *et al.* Lgr5 homologues associate with Wnt receptors and mediate R-spondin signalling. *Nature* **476**, 293–297 (2011).
92. Glinka, A. *et al.* LGR4 and LGR5 are R-spondin receptors mediating Wnt/ β -catenin and Wnt/PCP signalling. *EMBO Rep.* **12**, 1055–1061 (2011).
93. Haramis, A. P. *et al.* *De novo* crypt formation and juvenile polyposis on BMP inhibition in mouse intestine. *Science* **303**, 1684–1686 (2004).
94. Morrison, S. J., Uchida, N. & Weissman, I. L. The biology of hematopoietic stem cells. *Annu. Rev. Cell Dev. Biol.* **11**, 35–71 (1995).
95. Wright, D. E., Wagers, A. J., Gulati, A. P., Johnson, F. L. & Weissman, I. L. Physiological migration of hematopoietic stem and progenitor cells. *Science* **294**, 1933–1936 (2001).
96. Zhang, J. W. *et al.* Identification of the haematopoietic stem cell niche and control of the niche size. *Nature* **425**, 836–841 (2003).
97. Calvi, L. M. *et al.* Osteoblastic cells regulate the haematopoietic stem cell niche. *Nature* **425**, 841–846 (2003).
98. Hattori, K. *et al.* Placental growth factor reconstitutes hematopoiesis by recruiting VEGFR1⁺ stem cells from bone-marrow microenvironment. *Nature Med.* **8**, 841–849 (2002).
99. Sugiyama, T., Kohara, H., Noda, M. & Nagasawa, T. Maintenance of the hematopoietic stem cell pool by CXCL12–CXCR4 chemokine signaling in bone marrow stromal cell niches. *Immunity* **25**, 977–988 (2006).
100. North, T. E. *et al.* Hematopoietic stem cell development is dependent on blood flow. *Cell* **137**, 736–748 (2009).
101. Naveiras, O. *et al.* Bone-marrow adipocytes as negative regulators of the haematopoietic microenvironment. *Nature* **460**, 259–263 (2009).
102. Mendez-Ferrer, S. *et al.* Mesenchymal and haematopoietic stem cells form a unique bone marrow niche. *Nature* **466**, 829–834 (2010).
103. Omatsu, Y. *et al.* The essential functions of adipogenic progenitors as the hematopoietic stem and progenitor cell niche. *Immunity* **33**, 387–399 (2010).
104. Raaijmakers, M. H. *et al.* Bone progenitor dysfunction induces myelodysplasia and secondary leukaemia. *Nature* **464**, 852–857 (2010).
105. Yamazaki, S. *et al.* Nonmyelinating schwann cells maintain hematopoietic stem cell hibernation in the bone marrow niche. *Cell* **147**, 1146–1158 (2011).
106. Visnjic, D. *et al.* Conditional ablation of the osteoblast lineage in Col2.3 Δ tk transgenic mice. *J. Bone Miner. Res.* **16**, 2222–2231 (2001).
107. Visnjic, D. *et al.* Hematopoiesis is severely altered in mice with an induced osteoblast deficiency. *Blood* **103**, 3258–3264 (2004).
108. Miyamoto, K. *et al.* Osteoclasts are dispensable for hematopoietic stem cell maintenance and mobilization. *J. Exp. Med.* **208**, 2175–2181 (2011).
109. Fujisaki, J. *et al.* *In vivo* imaging of T_{reg} cells providing immune privilege to the haematopoietic stem-cell niche. *Nature* **474**, 216–219 (2011).
Provides evidence suggesting that T_{reg} cells protect their HSC parents from immune attack by making the endosteal niche an immune-privileged site.
110. Winkler, I. G. *et al.* Bone marrow macrophages maintain hematopoietic stem cell (HSC) niches and their depletion mobilizes HSCs. *Blood* **116**, 4815–4828 (2010).
111. Chow, A. *et al.* Bone marrow CD169⁺ macrophages promote the retention of hematopoietic stem and progenitor cells in the mesenchymal stem cell niche. *J. Exp. Med.* **208**, 261–271 (2011).
References 110 and 111 show that macrophages, which are a type of HSC progeny of the myeloid lineage, function in retaining HSCs in their bone marrow niche.
112. Christopher, M. J., Rao, M., Liu, F., Woloszynek, J. R. & Link, D. C. Expression of the G-CSF receptor in monocytic cells is sufficient to mediate hematopoietic progenitor mobilization by G-CSF in mice. *J. Exp. Med.* **208**, 251–260 (2011).
113. Wieschaus, E. & Szabad, J. The development and function of the female germ line in *Drosophila melanogaster*: a cell lineage study. *Dev. Biol.* **68**, 29–46 (1979).
114. Lin, H. & Spradling, A. C. Germline stem cell division and egg chamber development in transplanted *Drosophila* germlaria. *Dev. Biol.* **159**, 140–152 (1993).
115. Xie, T. & Spradling, A. C. *decapentaplegic* is essential for the maintenance and division of germline stem cells in the *Drosophila* ovary. *Cell* **94**, 251–260 (1998).
116. Casanueva, M. O. & Ferguson, E. L. Germline stem cell number in the *Drosophila* ovary is regulated by redundant mechanisms that control Dpp signaling. *Development* **131**, 1881–1890 (2004).
117. Mondal, B. C. *et al.* Interaction between differentiating cell- and niche-derived signals in hematopoietic progenitor maintenance. *Cell* **147**, 1589–1600 (2011).

Acknowledgements

We thank B. Keyes, T. Chen and M. Genander for critical readings and comments of the manuscript. Y.-C.H. was a Starr Stem Cell Scholars postdoctoral fellow and is now supported by a New York Stem Cell Foundation–Druckenmiller fellowship. E.F. is a Howard Hughes Medical Institute Investigator. This work is supported by a grant from the US National Institutes of Health (R01-AR050452).

Competing interests statement

The authors declare no competing financial interests.

FURTHER INFORMATION

Elaine Fuchs's homepage: <http://lab.rockefeller.edu/fuchs>

ALL LINKS ARE ACTIVE IN THE ONLINE PDF